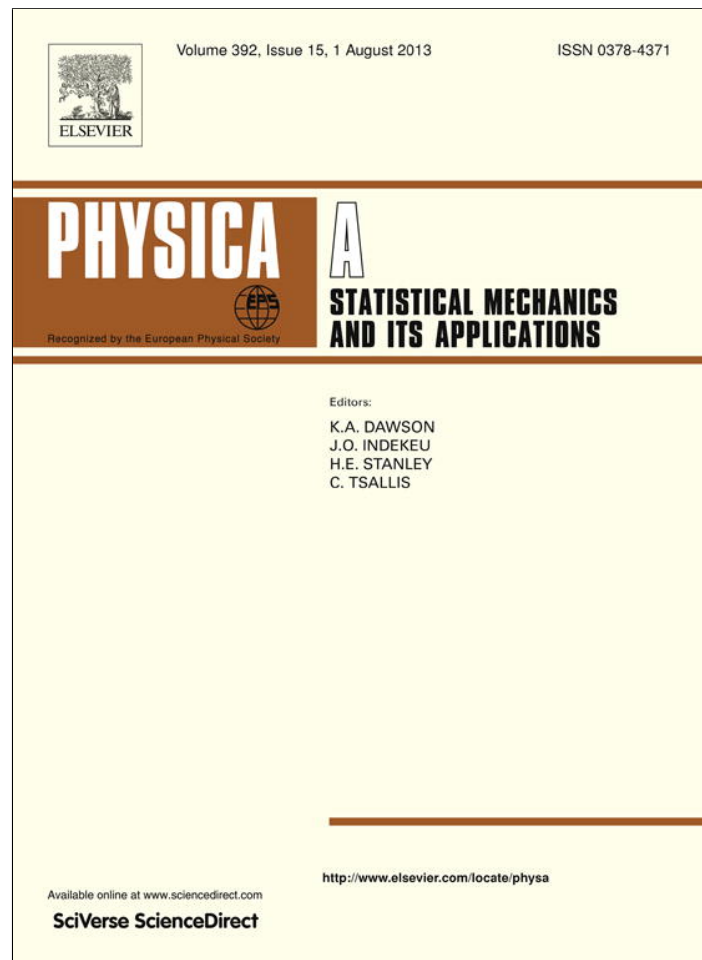


Provided for non-commercial research and education use.
Not for reproduction, distribution or commercial use.



This article appeared in a journal published by Elsevier. The attached copy is furnished to the author for internal non-commercial research and education use, including for instruction at the authors institution and sharing with colleagues.

Other uses, including reproduction and distribution, or selling or licensing copies, or posting to personal, institutional or third party websites are prohibited.

In most cases authors are permitted to post their version of the article (e.g. in Word or Tex form) to their personal website or institutional repository. Authors requiring further information regarding Elsevier's archiving and manuscript policies are encouraged to visit:

<http://www.elsevier.com/authorsrights>



Contents lists available at SciVerse ScienceDirect

Physica A

journal homepage: www.elsevier.com/locate/physa

Gregarious versus individualistic behavior in Vicsek swarms and the onset of first-order phase transitions



Gabriel Baglietto^{a,b}, Ezequiel V. Albano^{a,c}, Julián Candia^{a,d,*}

^a Instituto de Física de Líquidos y Sistemas Biológicos (CONICET, UNLP), 59 Nro 789, 1900 La Plata, Argentina

^b Facultad de Ingeniería (UNLP), La Plata, Argentina

^c Departamento de Física, Facultad de Ciencias Exactas (UNLP), La Plata, Argentina

^d Department of Physics, University of Maryland, College Park, MD 20742, USA

HIGHLIGHTS

- We extend the standard Vicsek model to allow particles with individualistic behavior.
- A relatively small probability of individualistic motion is sufficient to drive the system from order to disorder.
- The new phase transition is discontinuous, as opposed to the Vicsek model's noise-driven continuous phase transition.

ARTICLE INFO

Article history:

Received 14 August 2012

Received in revised form 18 February 2013

Available online 10 April 2013

Keywords:

Self-propelled particles

Vicsek model

Flocking

Swarming

ABSTRACT

The standard Vicsek model (SVM) is a minimal non-equilibrium model of self-propelled particles that appears to capture the essential ingredients of critical flocking phenomena. In the SVM, particles tend to align with each other and form ordered flocks of collective motion; however, perturbations controlled by a noise term lead to a noise-driven continuous order–disorder phase transition. In this work, we extend the SVM by introducing a parameter α that allows particles to be individualistic instead of gregarious, i.e. to choose a direction of motion independently of their neighbors. By focusing on the small-noise regime, we show that a relatively small probability of individualistic motion (around 10%) is sufficient to drive the system from a Vicsek-like ordered phase to a disordered phase. Despite the fact that the α -extended model preserves the $O(n)$ symmetry and the interaction range, as well as the dimensionality of the underlying SVM, this novel phase transition is found to be discontinuous (first order), an intriguing manifestation of the richness of the non-equilibrium flocking/swarming phenomenon.

© 2013 Elsevier B.V. All rights reserved.

1. Introduction

Swarming and flocking arise as emergent phenomena of collective motion behavior in a large variety of living and non-living self-propelled particle systems of great interdisciplinary interest. Nature offers a huge variety of collective motion phenomena in self-propelled living systems at all scales, from biomolecular micromotors, migrating cells and growing bacteria colonies, to insect swarms, fish schools, bird flocks, mammal herds, and even human crowds [1]. Moreover, many non-living systems of great practical interest involve collective motion and swarming behavior, particularly in robotics, where swarms of robots are used in terrain exploration, plague control, optimization of telecommunication networks, surveillance and defense, and other tasks without centralized control that appear too challenging to be carried out by an individual agent [1]. Very recently, the novel concept of chemical robots (also known as *chobots*) has been envisioned as

* Corresponding author at: Instituto de Física de Líquidos y Sistemas Biológicos (CONICET, UNLP), 59 Nro 789, 1900 La Plata, Argentina.
E-mail address: juliancandia@gmail.com (J. Candia).

an army of millions of micrometer-sized robots whose tasks will be to release a chemical payload, or to mix two chemical reactants from different compartments within the chobots when they reach their goal [2].

Instead of focusing on the specific details that make each of these self-propelled systems unique, statistical physicists have been studying the general patterns of collective motion, aiming to identify the general laws and underlying principles that may govern their behavior. From this perspective, one important question to address is the onset of ordered macroscopic phases, i.e. the way in which individuals having short-range interactions are capable of self-organizing into large-scale cooperative patterns in the absence of leaders or other ordering cues from the environment. By analogy with large molecular systems, flocking and swarming phenomena can be associated with phase transitions that depend on a few parameters that characterize the macroscopic states, such as the density of individuals and the flock size. For instance, Buhl et al. [3] investigated the collective motion of locusts, which display a density-driven transition from disordered movement of individuals within the group to highly aligned collective motion. Similar transitions have been observed in the collective motion of zooplankton swarms [4], fish schools [5], and many other self-propelled particle systems (see [1] and the references therein).

On the theoretical side, Vicsek et al. [6] proposed a minimal model to study the onset of order in systems of self-driven individuals, which was later followed by other investigations by means of agent-based modeling [7–9], the Newtonian force-equation approach [10,11], and the hydrodynamic approximation [12–14]. The so-called standard Vicsek model (SVM) [6] assumes that neighboring individuals tend to align their direction of movement when they are placed within a certain interaction range. This alignment rule, which would trivially lead to fully ordered collective motion, is complemented by a second one that introduces noise in the communications among individuals. In their seminal paper, Vicsek et al. show that the noise amplitude drives the system through a continuous second-order transition between an ordered phase of collective motion and a disordered phase.

In this context, the aim of this work is to explore an extension of the SVM, in which an additional parameter α is introduced to control the gregarious versus individualistic behavior of particle motion. That is, an individual has a probability α of adopting its own direction of motion regardless of its neighbors, and a probability $1 - \alpha$ of moving according to the SVM's rules. This α -extended model may account for “free-will” behavior in biological systems (i.e. the fact that living organisms are not ruled by fixed decision algorithms and are therefore able to make unforeseen individualistic decisions at any time) as well as for random failures in robotic and other artificial self-propelled particle systems (e.g. the chemically driven *chobots* mentioned above). By focusing on the small-noise regime, we show that a relatively small probability of individualistic motion (around 10%) is sufficient to drive the system from a Vicsek-like ordered phase to a disordered phase. Besides the practical interest of extending the well-studied SVM to novel scenarios of particle behavior, we find a theoretically intriguing manifestation of the richness of the swarming phenomenon, namely that the α -driven phase transition is discontinuous (first order), despite the fact that the α -extended model preserves the $O(n)$ symmetry and the interaction range, as well as the dimensionality of the underlying SVM.

The rest of this paper is organized as follows. In Section 2, we present the definition of the SVM and the α -extended model. Section 3 presents a discussion of our results, while our conclusions are presented in Section 4.

2. The standard Vicsek model (SVM) and the α -extended model

The SVM [6] consists of a fixed number of interacting particles, N , which are moving on a plane. In computer simulations, that plane is typically represented by a square of side L with periodic boundary conditions [6,15]. The particles move off the lattice with constant and common speed $v_0 \equiv |\vec{v}|$. Each particle interacts locally adopting the direction of motion of the subsystem of neighboring particles (within an interaction circle of radius R_0 centered in the particle considered), which is perturbed by the presence of noise. Since the interaction radius is the same for all particles, we adopt the interaction radius as the unit of length throughout, i.e. $R_0 \equiv 1$. The model is implemented as a cellular automaton, i.e. all particles update their states simultaneously in one time step.

The updated direction of motion for the i th particle, θ_i^{t+1} , is given by

$$\theta_i^{t+1} = \text{Arg} \left[\sum_{(i,j)} e^{i\theta_j^t} \right] + \eta \xi_i^t, \quad (1)$$

where η is the noise amplitude, the summation is carried over all particles within the interaction circle centered at the i th particle, and ξ_i^t is a realization of a δ -correlated white noise uniformly distributed in the range between $-\pi$ and π .

In this work, we implement the model dynamics by adopting the so-called forward update (FU) rule, in which the updated velocities at time $t + 1$ determine the new positions according to

$$\vec{x}_i^{t+1} = \vec{x}_i^t + \vec{v}_i^{t+1} \Delta t, \quad (2)$$

where $\Delta t \equiv 1$ is the unitary time step of the cellular automaton. This scheme is used for computational convenience, since the transient length is shorter than using the backward update rule that determines the new velocities *after* the positions are updated. In the context of Vicsek model studies, the FU rule was first introduced by Chaté et al. [16,17]. As explained in Ref. [18], the FU scheme requires one to implement an algorithm that ensures the $O(n)$ rotational invariance of the SVM,

since spurious effects induced by the boundary conditions of the simulation space may arise otherwise. At every time step, a frame rotation angle, Θ_{fr} , is randomly selected with uniform probability in the range $-\pi \leq \Theta_{fr} < \pi$. After all particle velocities are accordingly transformed, the usual Vicsek model rules are applied. The effects of boundary conditions on the displacement space, as well as alternative methods to ensure the $O(n)$ rotational invariance, are further discussed in Refs. [18–20].

In order to study the relative effects of gregarious versus individualistic behavior, we consider an extension of the SVM model in which a parameter $\alpha > 0$ is introduced as follows. When considering the new velocity of a given particle, we first determine whether that particle will behave individually or gregariously: with probability α , the particle will choose a new direction of motion at random (and independently of its neighbors), and, with probability $1 - \alpha$, the particle's new velocity will follow the standard Vicsek rule, Eq. (1). In the former case, the new direction of motion is randomly chosen with uniform probability in the range between $-\pi$ and π . In passing, let us point out that, in a different context, mixtures of spins coupled to independent heat baths have been studied for the kinetic Ising model and far-from-equilibrium spin chains [21–24]. By analogy, we can consider our model as dealing with off-lattice ferromagnetic “spins” that undergo displacements along the direction of the spin. At any given time, gregarious individuals could be thought of as “cold spins”, while individualistic individuals could be analogously regarded as “hot spins” coupled to a thermal bath at infinite temperature. Notice also that, although more complex variations of the SVM could be considered, we purposefully focus on the simplest extension of the SVM that includes a “free-will” option (or “failure” option, if considered within the context of non-living systems). Indeed, it is our aim to preserve the minimal nature of the SVM and show that, from the point of view of non-equilibrium statistical mechanics, a qualitatively novel and distinct behavior arises from this simple extension. Moreover, the SVM is fully recovered by simply letting $\alpha \rightarrow 0$.

The parameters of the model are the number of particles N , the dimension of the displacement space d , the linear size of the displacement space L , the interaction radius R_0 , the particle density ρ , the particle speed v_0 , the noise amplitude η , and the individualistic probability α . Notice, however, that $\rho = N/L^d$, where $d = 2$ in the standard case, and that $R_0 \equiv 1$ can be chosen as the unit of length. Moreover, v_0^{-1} merely plays the role of a “thermalization parameter” that measures how many times, on average, two neighbors check out each other's positions while they remain at a distance within the unitary interaction radius. Therefore, relative large values of speed (typically $v_0 \geq 0.3$) correspond to the low-thermalization regime, characterized by highly anisotropic diffusion and the manifestation of simulation artifacts in the form of directionally quantized density waves (see Ref. [19] for details). In order to avoid spurious artifacts, we choose $v_0 = 0.1$ and the density value $\rho = 0.25$ throughout, which are standard values in the Vicsek model literature [6]. Moreover, in order to pinpoint effects due to the α -extension, we consider the small-noise regime ($\eta \ll 1$) throughout, and focus on the behavior of the system over a wide range of values of the parameter α . Also, finite-size effects are assessed by studying several system sizes in the range $16384 \leq N \leq 131072$.

In our simulations, one time step is defined by the simultaneous update of velocities and positions for all N particles in the system. For each set of parameter values, time series of 7×10^6 time steps have been generated. All observables measured here are statistical averages within the steady-state regime, which is typically attained after $1 - 2 \times 10^6$ time units. Let us also point out that, for the largest system sizes studied here (i.e. $N > 10^5$), generating this large number of steady-state configurations requires a significant computational effort.

3. Results and discussion

The well-studied SVM exhibits a far-from-equilibrium continuous phase transition between ordered states of motion at low noise levels and disordered motion at high noise levels. The natural order parameter is given by the absolute value of the normalized mean velocity of the system [6]:

$$\varphi = \frac{1}{Nv_0} \left| \sum_{i=1}^N \vec{v}_i \right|, \quad (3)$$

where φ is close to zero in the disordered phase and close to unity in the ordered phase. In order to analyze the critical nature of the SVM, this noise-driven phase transition has been investigated by several approaches, e.g. finite-size scaling analysis and short-time critical dynamic techniques [25,26].

In this work, we explore the α -extended Vicsek model, where the parameter α measures the probability for individualistic behavior (see Section 2 above for details). Since we focus on the small-noise regime, the $\alpha \rightarrow 0$ limit corresponds to the SVM ordered phase. Fig. 1 shows the order parameter φ as a function of the parameter α . We observe that a relatively small probability of individualistic motion, $\alpha_t \approx 0.09$, is sufficient to drive the system from a Vicsek-like ordered phase ($\varphi > 0$) to a disordered phase ($\varphi \approx 0$). Moreover, finite-size effects are mild, as indicated by the near overlap of the plots of different system sizes in the range $16384 \leq N \leq 131072$. The absence of significant finite-size effects near the transition region at $\alpha_t \approx 0.09$ suggests that the phase transition may be discontinuous (first order) instead of the continuous (second-order) phase transition that is characteristic of the SVM. Indeed, the Binder cumulant analysis presented below will provide very strong evidence to confirm the first-order nature of the phase transition and will also allow us to determine the transition value with great accuracy. The dashed straight line in Fig. 1 shows the mean-field limit of φ versus α for $\eta = 0$ when all particles interact with each other, i.e. when $\rho \rightarrow \infty$ in the thermodynamic limit ($N \rightarrow \infty$). In this limiting case, a

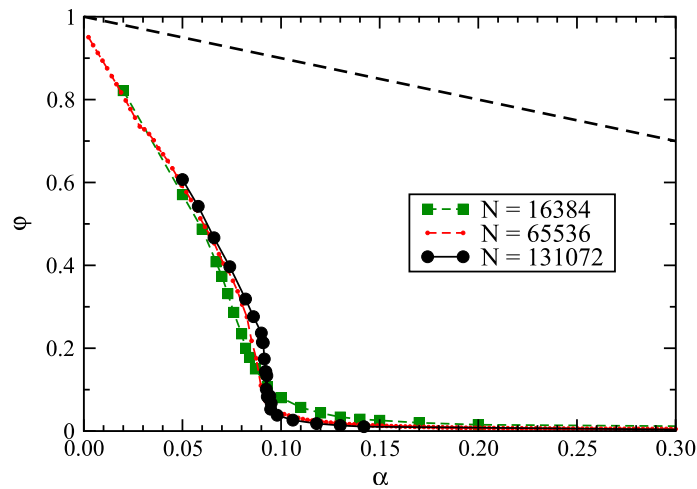


Fig. 1. Plots of the order parameter φ versus the parameter α (which measures the probability for individualistic behavior) for different system sizes, as indicated. By varying α , the system is driven across an order–disorder transition with very mild finite-size effects. The dashed straight line shows the mean-field behavior for $\eta = 0$ and $\rho \rightarrow \infty$ in the thermodynamic limit, where the effective interaction becomes long range and the order–disorder transition is exactly located at $\alpha_t = 1$.

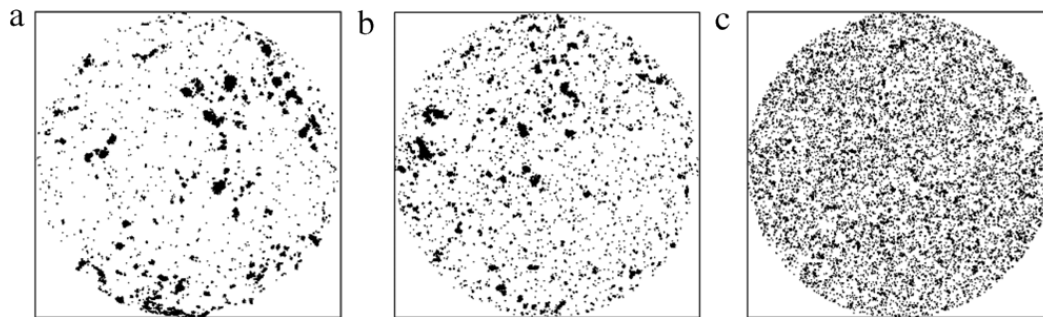


Fig. 2. Typical snapshot configurations for $N = 16384$ and different values for α : (a) $\alpha = 0.02$, (b) $\alpha = 0.093$, and (c) $\alpha = 0.20$. These configurations have been generated by applying the algorithm proposed in Ref. [18], in which the $O(n)$ rotational invariance is enforced explicitly in the model's dynamic rules.

fraction α of the system is formed by particles moving in random directions and therefore has a null contribution to the order parameter, while a fraction $1 - \alpha$ is fully aligned along the mean direction of motion of the whole system. Thus, $\varphi = 1 - \alpha$. It is interesting to note that, in this limit of infinite density where the effective interaction becomes long range, the transition from order to disorder is exactly located at $\alpha_t = 1$.

Further qualitative insight can be gained by looking at the clustering of particles in typical snapshot configurations across the transition. Notice that the standard order parameter for Vicsek-like flocking phenomena, Eq. (3), refers to the overall direction of motion of the particles. Therefore, the spatial distribution of particles offers a related complementary view of the degree of order in the system. Fig. 2 shows snapshot configurations for a system of size $N = 16384$ and different values for the individualistic probability α : (a) $\alpha = 0.02$, (b) $\alpha = 0.093$, and (c) $\alpha = 0.20$. The low- α regime (Fig. 2(a)) is characterized by the existence of large flocks that are responsible for a system-wide large-scale coherent motion. In between flocks, some regions display relatively large voids in which the particle density is very low. At the transition (Fig. 2(b)), the ordered flocks appear scattered throughout the system in coexistence with the disordered phase. Notice also that flock sizes do not appear to depart significantly from the average flock size, i.e. the snapshot suggests that the flock size distribution does not follow a power law (as would be expected if the transition were continuous). Finally, the high- α regime (Fig. 2(c)) shows a configuration in which individuals are nearly evenly distributed across the system and large flocks are absent, as expected for the disordered phase. Thus, at a qualitative level, we observe that the spatial distribution of individuals exhibits different configurations that, as the parameter α is increased, change from ordered to disordered through a state of phase coexistence. Quantitative evidence for this first-order phase transition is provided by the so-called Binder cumulant of Vicsek's order parameter, as follows.

The Binder cumulant, defined by

$$U_4 = 1 - \frac{\langle \varphi^4 \rangle}{3 \langle \varphi^2 \rangle^2}, \quad (4)$$

is a fourth-order cumulant that is dependent on the variance and the kurtosis of the order parameter probability distribution. Since, for second-order phase transitions, the scaling prefactor of the cumulant is independent of the sample size, plots of

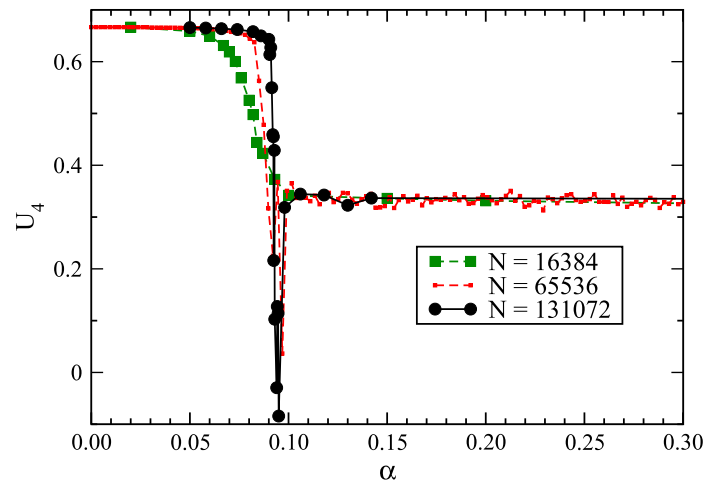


Fig. 3. Binder fourth-order cumulant U_4 as a function of the individualistic probability α for different system sizes, as indicated.

U_4 versus the control parameter lead to a common (size-independent) intersection point that corresponds to the location of the critical value of the order parameter in the thermodynamic limit [27]. Moreover, for first-order phase transitions, a characteristic signature is for U_4 to have a sharp fall towards negative values [28,29]. This hallmark behavior is somewhat elusive because it only appears for relatively large system sizes.

Fig. 3 displays the Binder cumulant as a function of the individualistic probability α for different system sizes, as indicated. In agreement with previous figures, the cumulant's behavior shows the existence of an α -driven phase transition. Furthermore, although not apparent in the small-sized system ($N = 16384$), the results for the larger systems studied here ($N \geq 65536$) show sharp minima at the transition point, which, as discussed above, is the signature behavior of discontinuous (first-order) phase transitions. The sharpness of these minima allows us to determine accurately the location of the transition at $\alpha_t = 0.0925 \pm 0.010$.

A hallmark behavior of a discontinuous phase transition is the phenomenon of metastability. In equilibrium systems, this phenomenon results from the coexistence of two or more local minima of the free energy, where each minimum corresponds to one of the coexisting phases at the transition. In finite-size systems, fluctuations may drive the system from one local minimum to another one across the free-energy barrier separating those (meta)stable states. In our non-equilibrium model, an analogous behavior is observed in time series of the order parameter. Fig. 4 shows the order parameter φ for a system of size $N = 131072$ as a function of time for different values of α across the transition region. Fig. 4(a) corresponds to $\alpha = 0.086$, i.e. below the phase transition. The system is pinned at the ordered phase and displays relatively small fluctuations around $\varphi \approx 0.25 - 0.30$. Notice also the transient regime from an initially fully disordered state at $t = 0$ to the steady-state regime, which in this case is reached after $t \approx 5 \times 10^5$. Fig. 4(b) corresponds to $\alpha = 0.0928$, where strong excursions are observed between one ordered (meta)stable state at $\varphi \approx 0.20$ and one disordered (meta)stable state at $\varphi \approx 0.05$. By increasing the control parameter slightly to $\alpha = 0.093$, Fig. 4(c) shows that the ordered metastable state becomes less likely than the disordered one. This strong sensitivity to small variations in α is in agreement with the sharp transition displayed by the Binder cumulant (Fig. 3 above). By increasing the control parameter further to $\alpha = 0.0947$, as shown by Fig. 4(d), the system stays mostly in the disordered state. In fact, excursions to the ordered metastable state become noticeably shorter in duration and much more sporadic.

The phenomenon of metastability is also reflected in the behavior of the probability distribution functions (pdfs) of the order parameter across the transition region. Fig. 5 shows the order parameter probability distribution functions for a system of size $N = 131072$ and the same values of α used in the previous figure. In Fig. 5(a), the distribution for $\alpha = 0.086$ is unimodal and centered around $\varphi \approx 0.25 - 0.30$, i.e. the order parameter has small fluctuations around the positive mean value that characterizes the ordered phase. Fig. 5(b), which corresponds to the transition value $\alpha = 0.0928$, is a bimodal distribution with two similar peaks associated with the coexistence of the ordered and disordered phases. In Fig. 5(c), which was obtained with $\alpha = 0.093$, one observes that the peak corresponding to the disordered phase becomes dominant, although the distribution is still bimodal. Finally, Fig. 5(d) represents the disordered regime for $\alpha = 0.0947$, where the local maximum associated with the ordered phase has completely vanished. As a summary, the panels of Fig. 5 display the occurrence of a sharp order–disorder transition that takes place within a very narrow range of values of α . The hallmark of a discontinuous phase transition, in which the two phases coexist, becomes evident by the bimodal probability distribution function of the order parameter at the transition, i.e. $\alpha \approx \alpha_t$. Below the transition within the ordered phase ($\alpha < \alpha_t$), the peak corresponding to the disordered phase vanishes; and, conversely, above the transition within the disordered phase ($\alpha > \alpha_t$), the peak associated with the ordered phase vanishes, and the peak corresponding to the disordered phase prevails.

So far, we have focused on the effects of adding individualistic motion, as controlled by the parameter α , on Vicsek-like self-propelled particles within the small-noise regime ($\eta \ll 1$). Let us now investigate the behavior of the α -extended model under non-negligible noise amplitudes. Fig. 6 shows the Binder cumulant as a function of the individualistic probability α

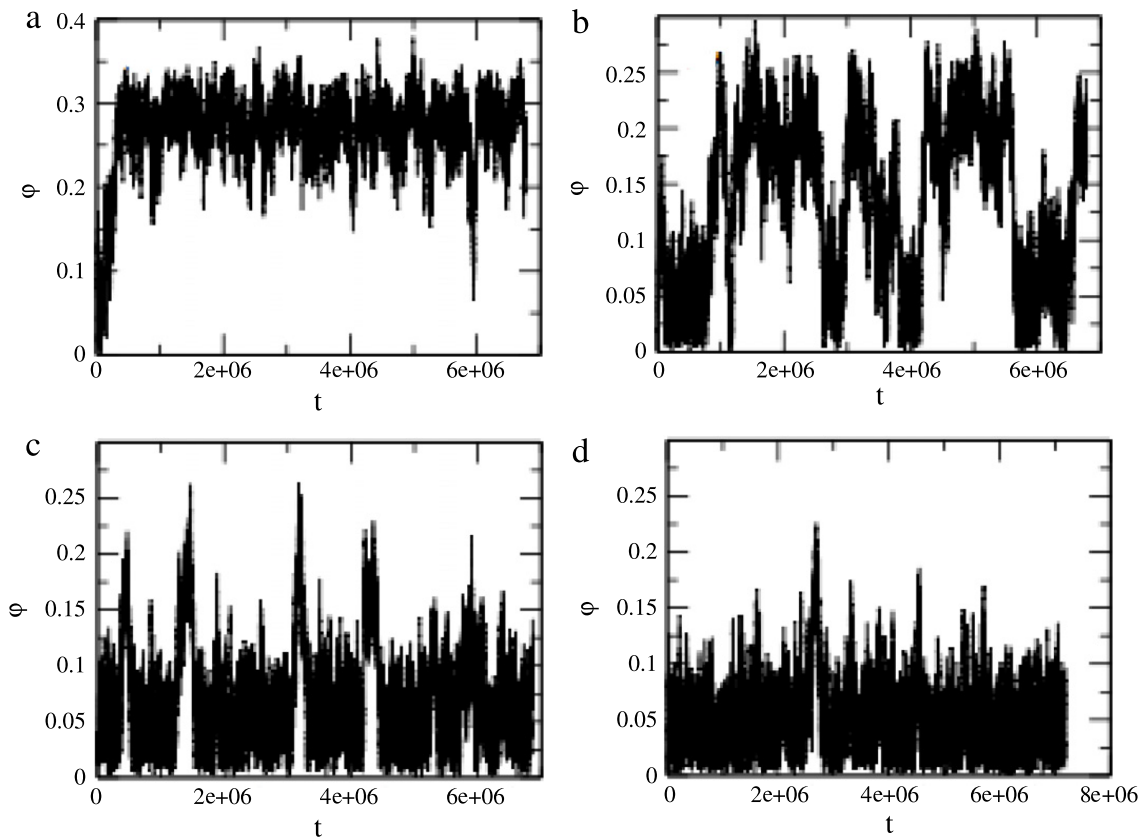


Fig. 4. Time series of the order parameter φ for a system of size $N = 131072$ and different values of α across the transition region. (a) For $\alpha = 0.086$, the system is ordered, and the order parameter displays small fluctuations around $\varphi \approx 0.25 - 0.30$. (b) For $\alpha = 0.0928$, strong excursions are observed between one ordered (meta)stable state at $\varphi \approx 0.20$ and one disordered (meta)stable state at $\varphi \approx 0.05$. (c) For $\alpha = 0.093$, the ordered metastable state is less likely than the disordered one. (d) For $\alpha = 0.0947$, the system stays chiefly in the disordered state; excursions to the ordered metastable state become shorter in duration and less frequent.

for $N = 131072$ and different noise amplitudes, as indicated. For very small noise amplitudes, e.g. $\eta = 0.01$, the Binder cumulant shows a sharp minimum at the transition, which, as we have discussed above, is a characteristic signature of first-order phase transitions (recall Fig. 3). As the noise amplitude is increased, however, the minima become less noticeable and appear shifted towards smaller values of α . Increasing the noise amplitude beyond the pure-Vicsek critical transition, i.e. $\eta > \eta_c = 0.134$ [25], all signatures of a transition vanish and the Binder cumulant appears flat, no longer depending on the parameter α . Based on these findings, we are able to sketch a phase diagram in the η versus α parameter space, as displayed in the inset to Fig. 6. On the one hand, transition points with characteristic first-order signatures are shown by filled circles. On the other hand, the collective motion transition in the pure-Vicsek limit with $\alpha = 0$ has been characterized as second order [6]; for the velocity and density parameters used in this work, the continuous second-order phase transition has been located at $\eta_c = 0.134$ [25] (shown by a star in the inset to Fig. 6).

Certainly, the fact that the smooth α -extension of the SVM changes the critical nature of the system is very intriguing. Indeed, these findings are a display of the richness of the swarming phenomenon even when represented by means of a minimal non-equilibrium model such as Vicsek's. As an example of a rich equilibrium minimal model, in which the critical nature of the underlying system is modified by the addition of a Hamiltonian term that preserves the model symmetries, the interaction range and the dimensionality, let us mention the Blume–Capel extension of the classical Ising model [30,31]. The Blume–Capel model adds a symmetry-preserving term proportional to a crystal field D that favors impurities ($S = 0$ states) over up/down spins ($S = \pm 1$ states). In the $D \rightarrow -\infty$ limit, the Blume–Capel model tends smoothly to the classical two-state Ising model. However, in some regions of the T – D parameter space, the order–disorder phase transition becomes discontinuous (first order) and a tricritical point can be determined. Reasoning by analogy, and based on the results discussed above, we therefore conjecture the existence of a tricritical point (as indicated in the inset to Fig. 6), which would separate the standard noise-driven continuous transition from the α -driven discontinuous transition reported here. The existence of such phenomenon, however, remains an open question that lies beyond the scope of the present work.

4. Conclusions

In this work, we investigated the so-called α -extended Vicsek model, in which a parameter α was introduced to control the gregarious versus individualistic behavior of particle motion. By focusing on the small-noise regime, we showed that

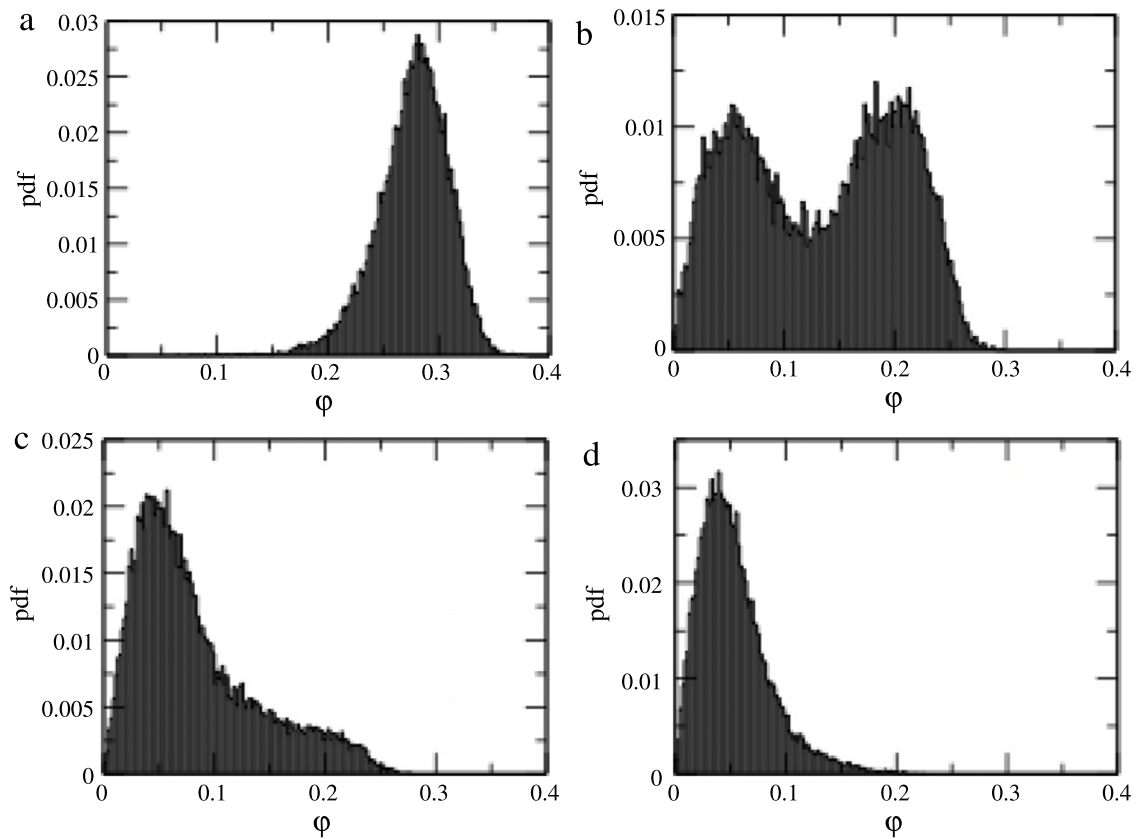


Fig. 5. Probability distribution functions (pdfs) of the order parameter for a system of size $N = 131072$ and different values of α across the transition region. (a) For $\alpha = 0.086$, the system is ordered and the pdf is unimodal and peaked around $\varphi \approx 0.25 - 0.30$. (b) For $\alpha = 0.0928$, the distribution is bimodal and corresponds to the coexistence of two distinct phases. (c) For $\alpha = 0.093$, the peak corresponding to the disordered phase prevails, although the distribution is still bimodal. (d) For $\alpha = 0.0947$, the peak associated with the ordered phase has vanished, and the distribution is completely dominated by the peak associated with the disordered phase.

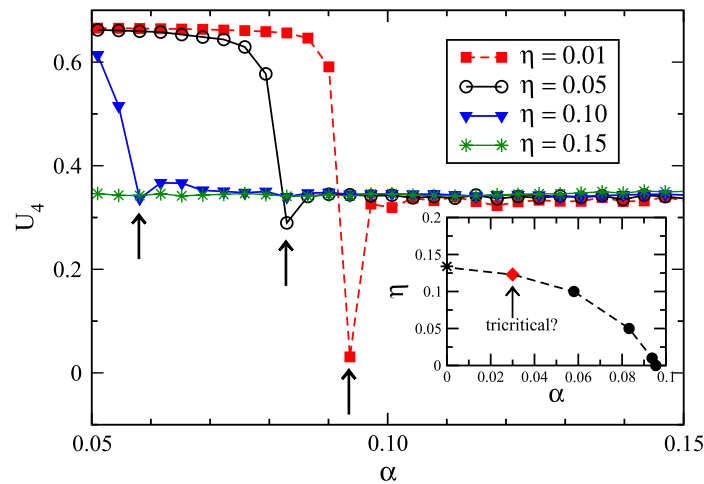


Fig. 6. Binder fourth-order cumulant U_4 as a function of the individualistic probability α for $N = 131072$ and different noise amplitudes, as indicated. Arrows mark the occurrence of minima. Inset: phase diagram in the η versus α parameter space, where filled circles indicate first-order transitions, the star shows the pure-Vicsek limit with a second-order transition, and the red diamond shows a hypothetical tricritical point. See more details in the text.

a relatively small probability of independent particle motion was sufficient to drive the system from a Vicsek-like ordered phase to a disordered phase. Indeed, the order parameter and its associated fourth-order Binder cumulant showed very strong evidence of a discontinuous first-order phase transition occurring at $\alpha_t = 0.0925 \pm 0.010$. Further qualitative and quantitative insight into the nature of the transition was provided by snapshot configurations and time series of the order parameter, as well as probability distribution functions of the order parameter.

The aims of the present study were two-fold. On the one hand, by extending the well-studied standard Vicsek model (SVM) to novel scenarios of particle behavior (while preserving, at the same time, its nature as a minimal model), we may

account for important features of real self-propelled particle systems that are not captured by the SVM, as for instance free-will behavior in biological systems and random failures in robotic and other artificial systems. Moreover, on the other hand, we found a theoretically intriguing manifestation of the richness of the swarming phenomenon, namely that the α -driven phase transition was discontinuous (first order), despite the fact that the α -extended model preserved the $O(n)$ symmetry and the interaction range, as well as the dimensionality of the underlying SVM.

By analogy to equilibrium systems such as the Blume–Capel extension of the classical Ising model, we conjecture the existence of a tricritical point in the η – α parameter space of the α -extended Model, which would separate the standard noise-driven continuous transition from the α -driven discontinuous transition reported here. Indeed, the existence of such phenomenon remains a very interesting open question that certainly deserves further investigation.

Acknowledgments

This work was financially supported by CONICET, UNLP, and ANPCyT (Argentina).

References

- [1] T. Vicsek, A. Zafeiris, *Phys. Rep.* 517 (2012) 71.
- [2] P. Grančič, F. Štěpánek, *Phys. Rev. E* 84 (2011) 021925.
- [3] J. Buhl, D.J.T. Sumpter, I.D. Couzin, J.J. Hale, E. Despland, E.R. Miller, S.J. Simpson, *Science* 312 (2006) 1402.
- [4] A. Ordemann, G. Balazsi, F. Moss, *Physica A* 325 (2003) 260.
- [5] C. Becco, N. Vandewalle, J. Delcourt, P. Poncin, *Physica A* 367 (2006) 487.
- [6] T. Vicsek, A. Czirók, E. Ben-Jacob, I. Cohen, O. Shochet, *Phys. Rev. Lett.* 75 (1995) 1226.
- [7] A. Czirók, A.-L. Barabási, T. Vicsek, *Phys. Rev. Lett.* 82 (1999) 209.
- [8] G. Grégoire, H. Chaté, *Phys. Rev. Lett.* 92 (2004) 025702.
- [9] M. Aldana, V. Dosssetti, C. Huepe, V.M. Kenkre, H. Larralde, *Phys. Rev. Lett.* 98 (2007) 095702.
- [10] A.S. Mikhailov, D.H. Zanette, *Phys. Rev. E* 60 (1999) 4571.
- [11] U. Erdmann, W. Ebeling, A.S. Mikhailov, *Phys. Rev. E* 71 (2005) 051904.
- [12] J. Toner, Y. Tu, *Phys. Rev. Lett.* 75 (1995) 4326.
- [13] Z. Csahók, A. Czirók, *Physica A* 243 (1997) 304.
- [14] J. Toner, Y. Tu, S. Ramaswamy, *Ann. Phys.* 318 (2005) 170.
- [15] G. Baglietto, E.V. Albano, *Comput. Phys. Commun.* 180 (2009) 527.
- [16] H. Chaté, F. Ginelli, G. Grégoire, F. Raynaud, *Phys. Rev. E* 77 (2008) 046113.
- [17] H. Chaté, F. Ginelli, G. Grégoire, F. Peruani, F. Raynaud, *Eur. Phys. J. B* 64 (2008) 451.
- [18] G. Baglietto, E.V. Albano, *Phys. Rev. E* 80 (2009) 050103(R).
- [19] M. Nagy, I. Daruka, T. Vicsek, *Physica A* 373 (2007) 445.
- [20] M. Aldana, H. Larralde, B. Vázquez, *Internat. J. Modern Phys. B* 23 (2009) 3661.
- [21] P.L. Garrido, J. Marro, *Physica A* 144 (1987) 585.
- [22] Z. Rácz, R.K.P. Zia, *Phys. Rev. E* 49 (1994) 139.
- [23] B. Schmittmann, F. Schmöser, *Phys. Rev. E* 66 (2002) 046130.
- [24] P.I. Hurtado, P.L. Garrido, J. Marro, *Phys. Rev. B* 70 (2004) 245409.
- [25] G. Baglietto, E.V. Albano, *Phys. Rev. E* 78 (2008) 021125.
- [26] G. Baglietto, E.V. Albano, J. Candia, *Interface Focus* 2 (2012) 708.
- [27] K. Binder, *Z. Phys. B* 43 (1981) 119.
- [28] K. Binder, D.P. Landau, *Phys. Rev. B* 30 (1984) 1477.
- [29] M.S.S. Challa, D.P. Landau, K. Binder, *Phys. Rev. B* 34 (1986) 1841.
- [30] M. Blume, *Phys. Rev.* 141 (1966) 517.
- [31] H.W. Capel, *Physica* 32 (1966) 966.